



ENCOUNTER

ArtEco Gallery



Alison Stolwood

Black Cap, 2012

Digital chromogenic mounted onto aluminium, 50.8 x 86.3 cm



Cow and Calf, 2009
Digital chromogenic, 76.2 x 101.6 cm



Dark Green Fritillary on Wildlife Attracting Mix, 2011
Photomontage from 5x4 negatives, digital print, 56.18 x 73.66 cm



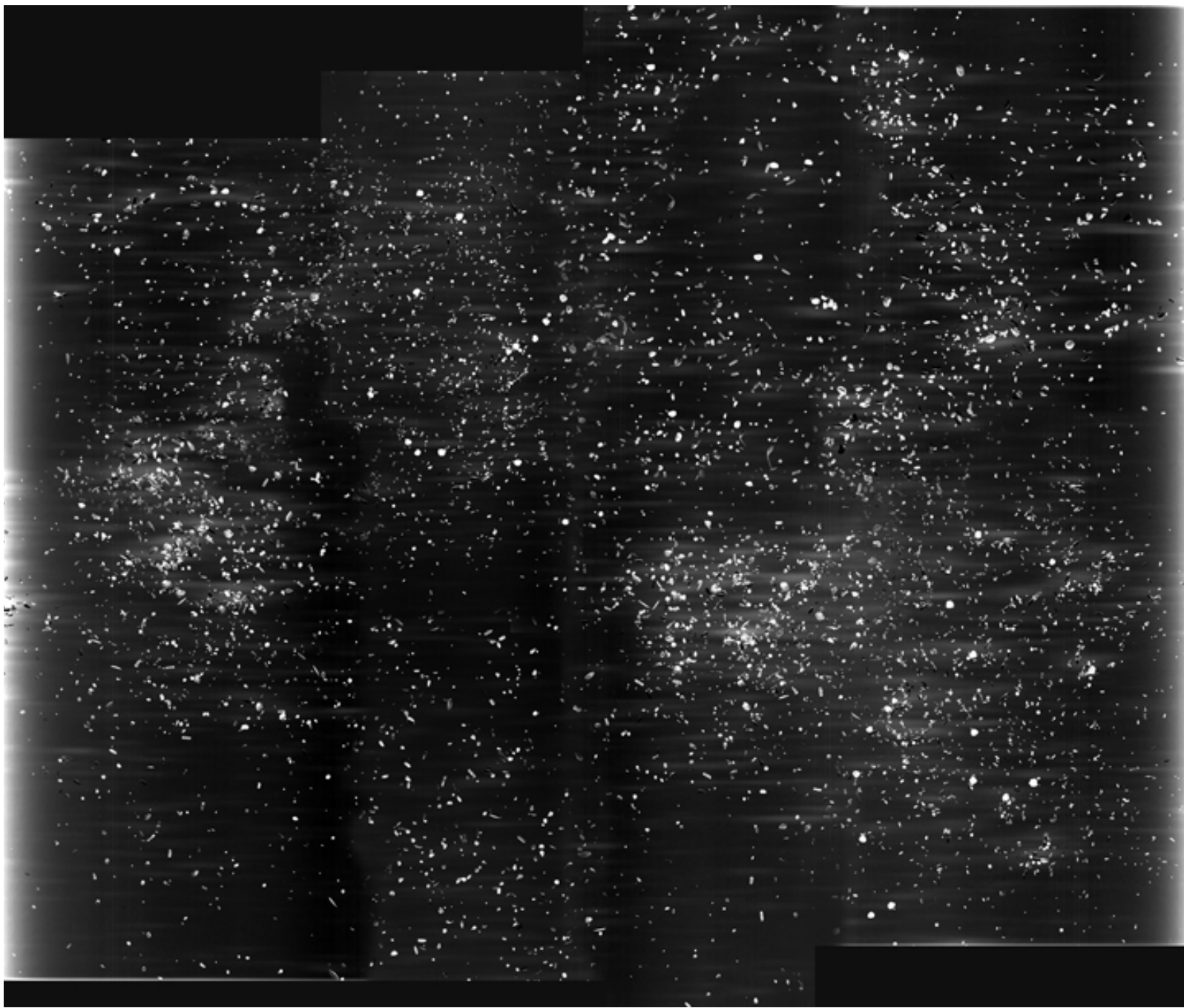
Greenhouse, 2012
Digital chromogenic, 50.8 x 61 cm



Milk Parsley Swallowtail and Puma, 2011
Photomontage from 5x4 negatives, digital chromogenic print, 47.66 x 58.42 cm



RiverBank, (Sor Brook - Convolution), 2012
Digital chromogenic mounted onto aluminium, 101.2 x 37.3 cm



Seed Composite 01, Mixed Varieties, 2011
Flatbed scan montage on giclee paper, 132.08 x 106.68 cm



*Seeds - Attraction Series, Butterfly Mixed, 2012
Giclee paper, 30.5 x 30.5 cm*



*Seeds - Mixed Bumblebee Friendly Flowers, 2012
Giclee paper, 30.5 x 30.5 cm*



*Seeds - Wildlife Garden, Meadowland Mix, 2012
Giclee paper, 30.5 x 30.5 cm*









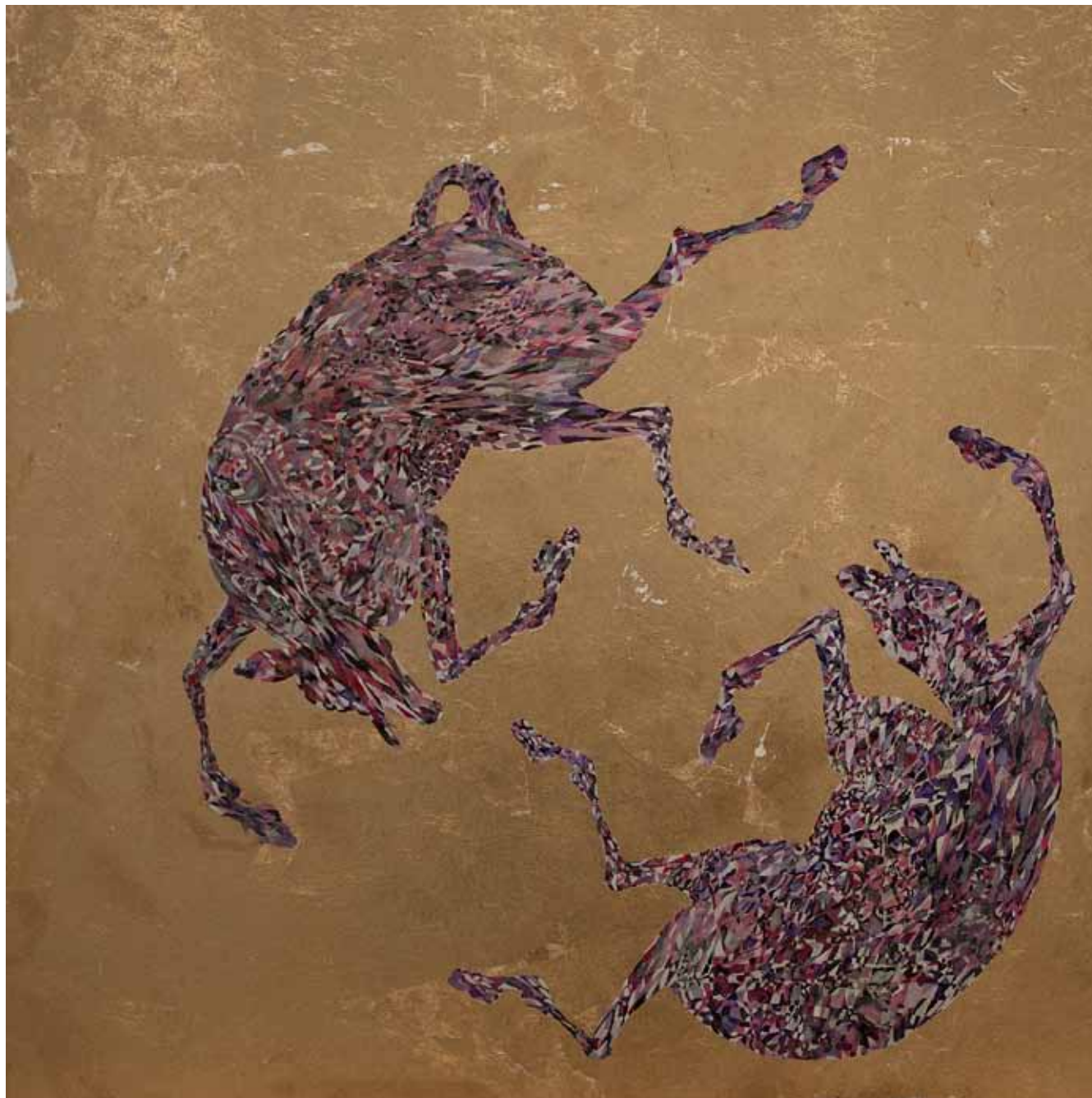




Radhika Agarwala

Untitled, 2012

Watercolour and gold leaf on panel, 82 x 76 cm



As The Gentle Beasts Come into My Paradise, 2012
Watercolour and gold leaf on panel, 82 x 76 cm



Synthesis of a Paradise Lost I-IV, 2012
Bronze





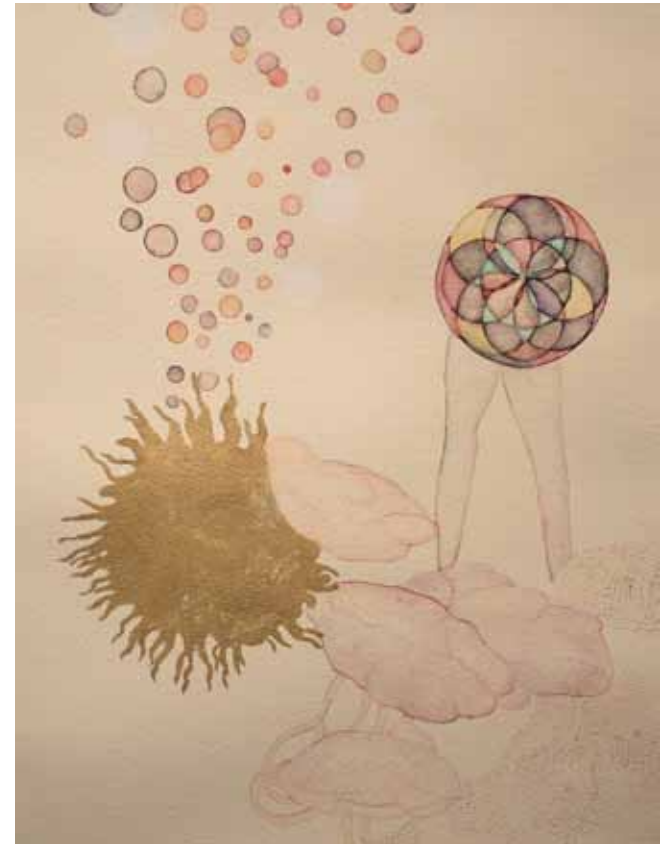
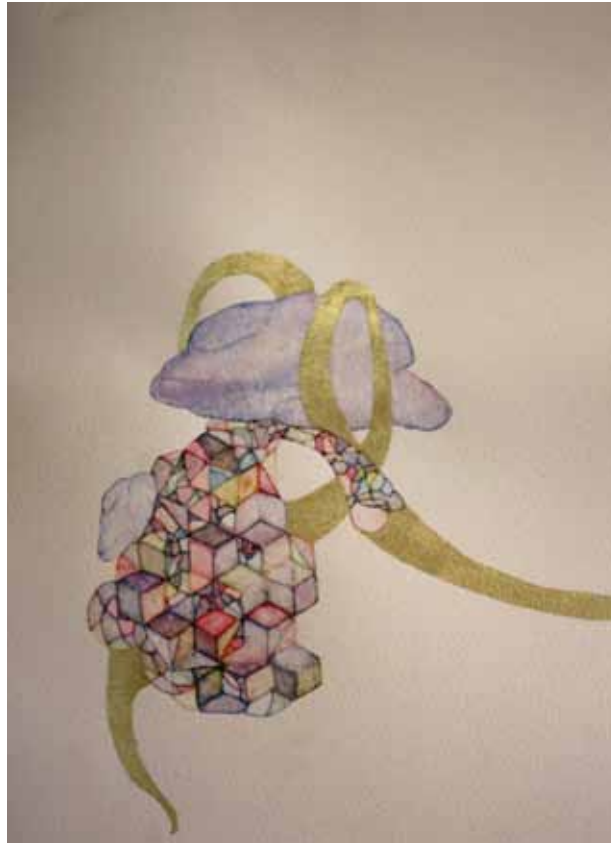
Synthesis of a Paradise Lost I-IV, 2012
Bronze



Synthesis of a Paradise Lost I-IV, 2012
Bronze



Synthesis of a Paradise Lost I-IV, 2012
Bronze



Rupture Series I, 2012
Watercolour and 22ct gold on paper, 35 x 28 cm



All Creatures Great and Small (No.s 1-10), 2012
Watercolour on paper



Rapture Series II (No.s 11-14), 2012
Watercolour on paper, 40 x 40 cm













The Hunter Series I, II, III, 2012
Oil and gold leaf on panel, 30 x 40 cm



The Hunter Series IV, 2012
Gouache and gold leaf on panel, 60 x 50 cm

